

BAROMÈTRE DES NOTAIRES

IMMOBILIER

WWW.NOTAIRE.BE

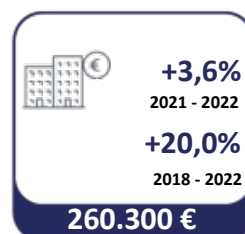
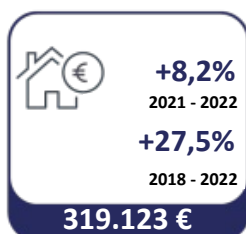
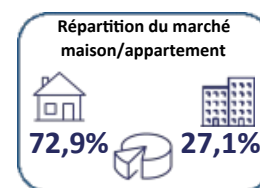
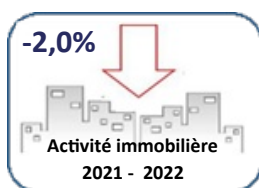
2022

Baromètre 55

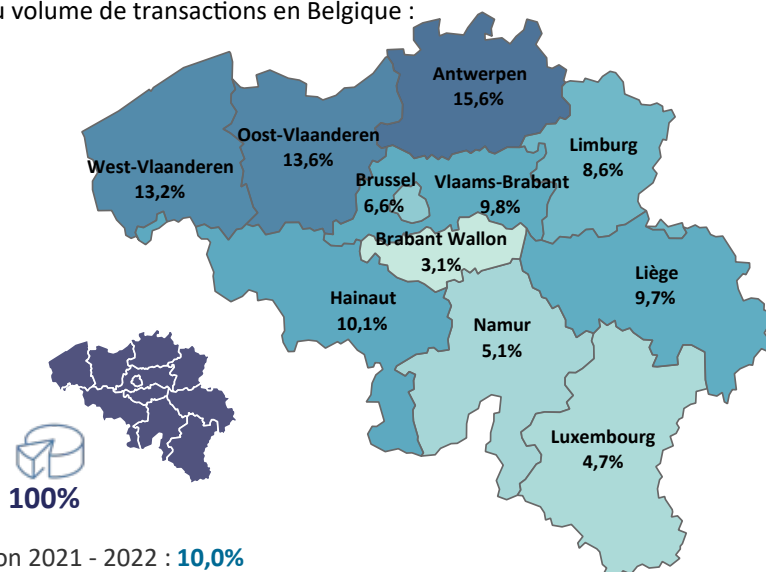
En 2022, le marché immobilier belge a connu un léger recul. Le nombre de transactions a baissé et les hausses de prix ont été inférieures à l'inflation.

Le baromètre analyse également les acquisitions de biens immobiliers en fonction de l'âge des acheteurs. En comparant l'année 2021 et 2022, nous constatons que la proportion de jeunes acquéreurs est stable en Wallonie et en baisse à Bruxelles.

Belgique

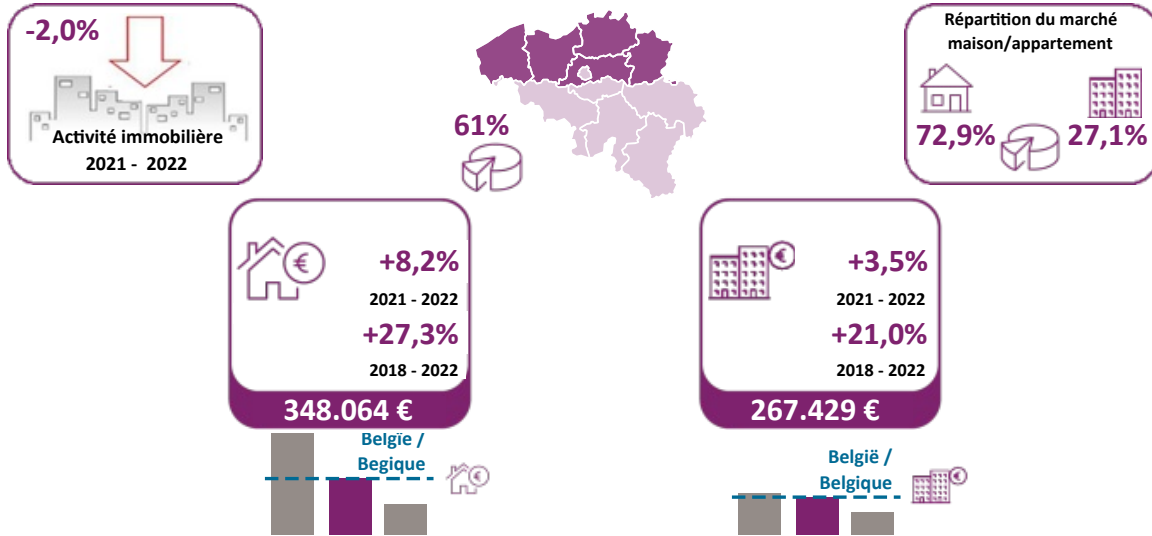


Répartition du volume de transactions en Belgique :

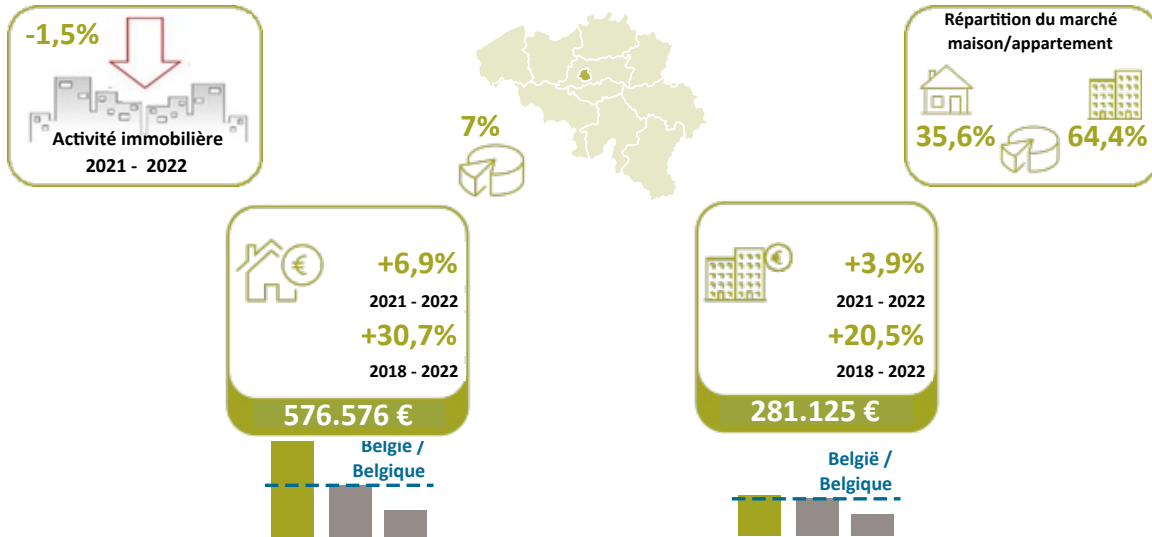


Inflation 2021 - 2022 : **10,0%**
Inflation 2017 - 2022 : **15,4%**

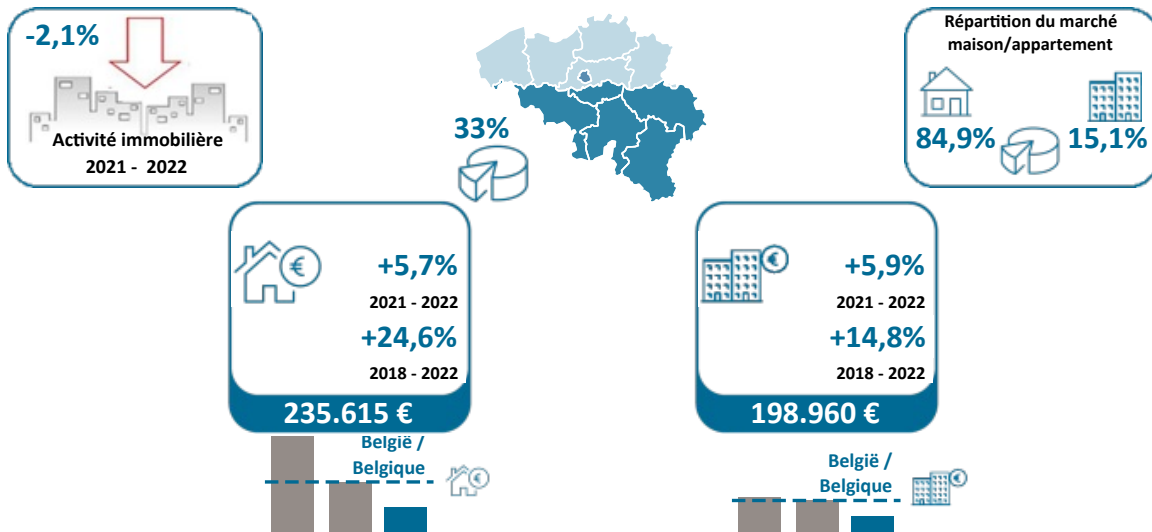
Flandre



Bruxelles

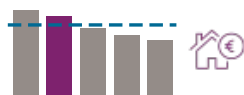
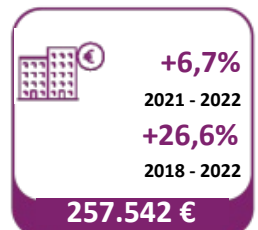
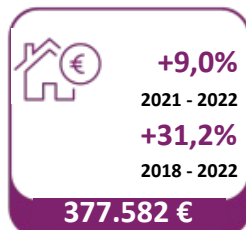
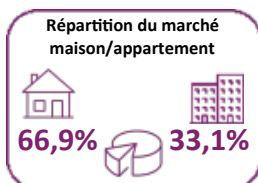
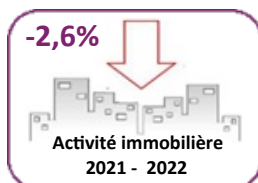


Wallonie

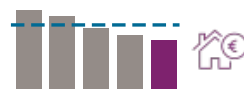
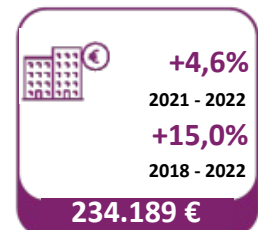
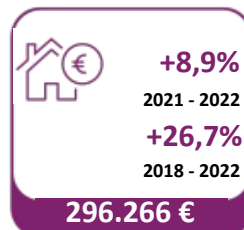
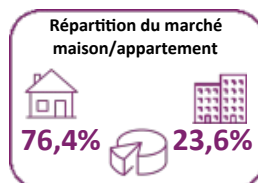
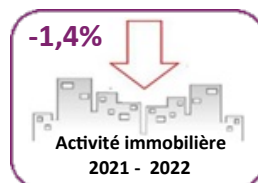


Provinces flamandes

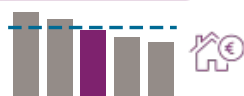
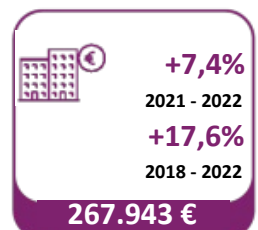
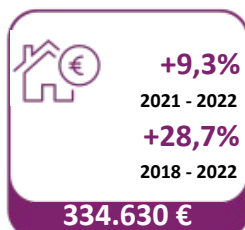
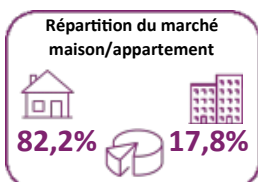
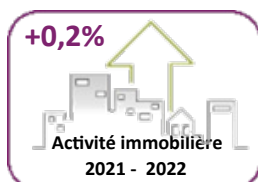
Anvers



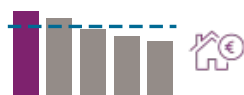
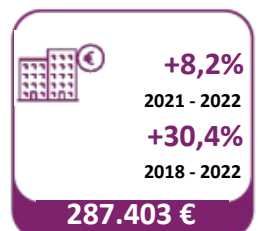
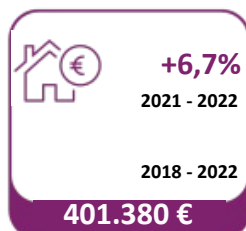
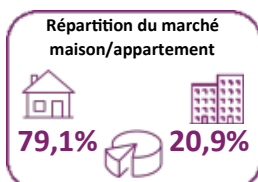
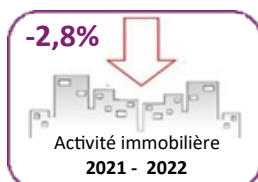
Limbourg



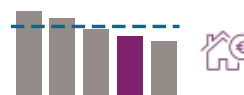
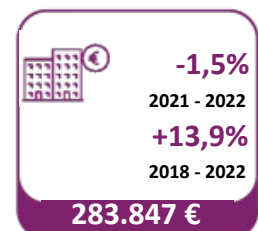
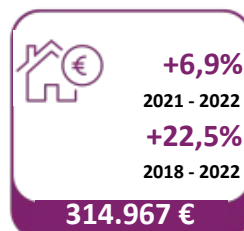
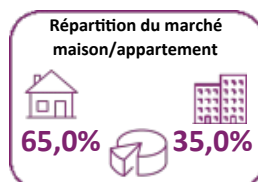
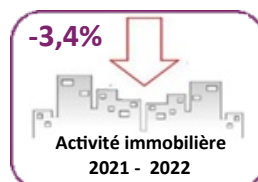
Flandre Orientale



Brabant Flamand

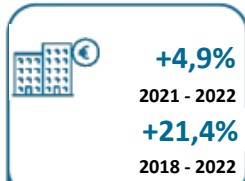
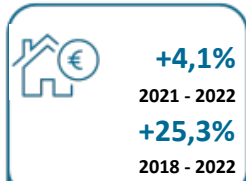
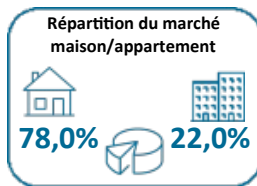
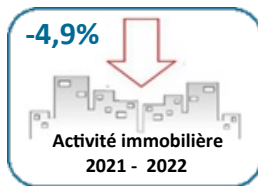


Flandre Occidentale



Provinces wallonnes

Brabant Wallon

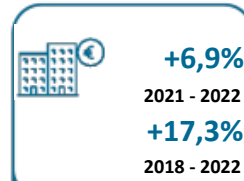
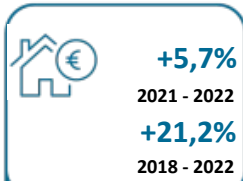
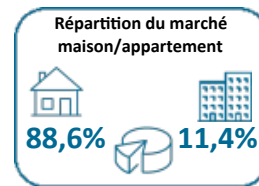
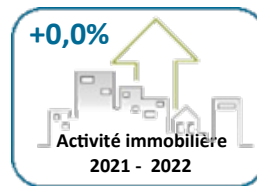


417.908 €

268.744 €



Hainaut

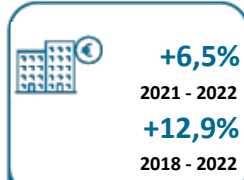
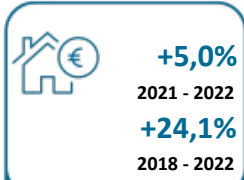
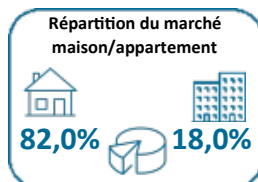
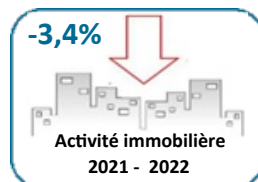


191.243 €

167.982 €



Liège

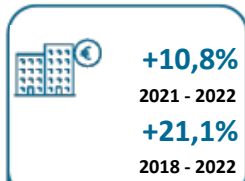
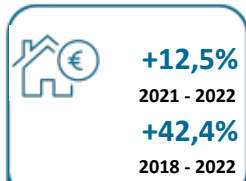
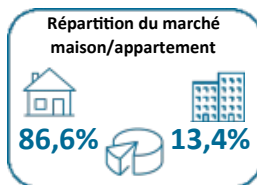
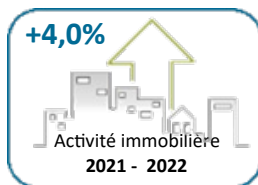


223.830 €

190.270 €



Luxembourg

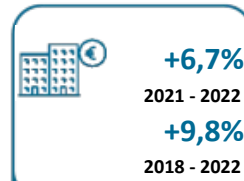
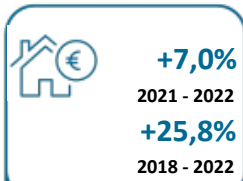
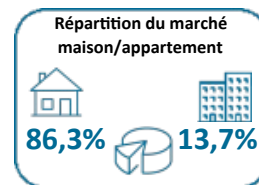
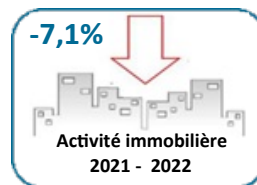


266.208 €

209.131 €



Namur

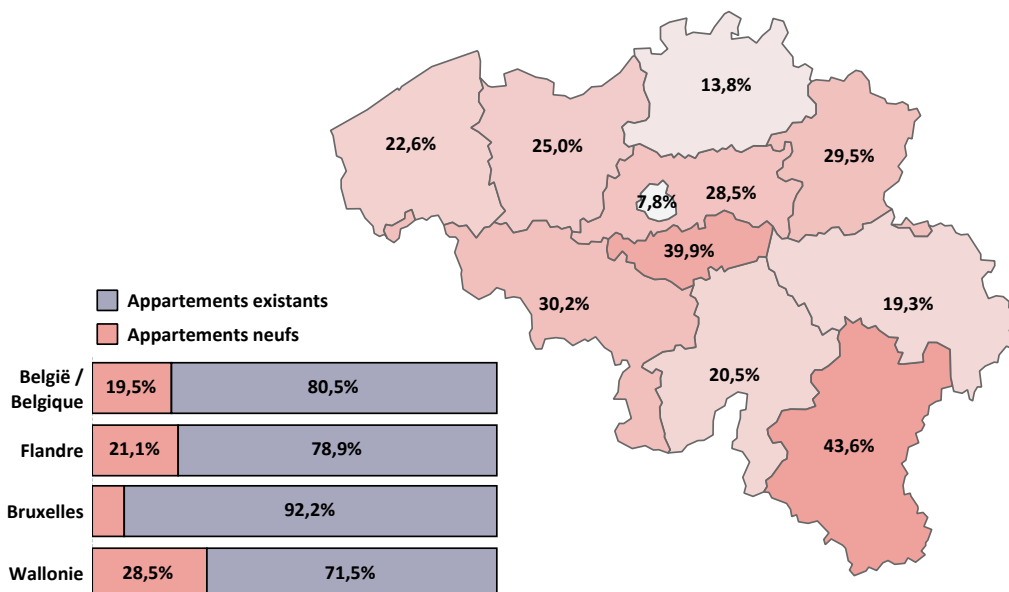


237.806 €

194.419 €

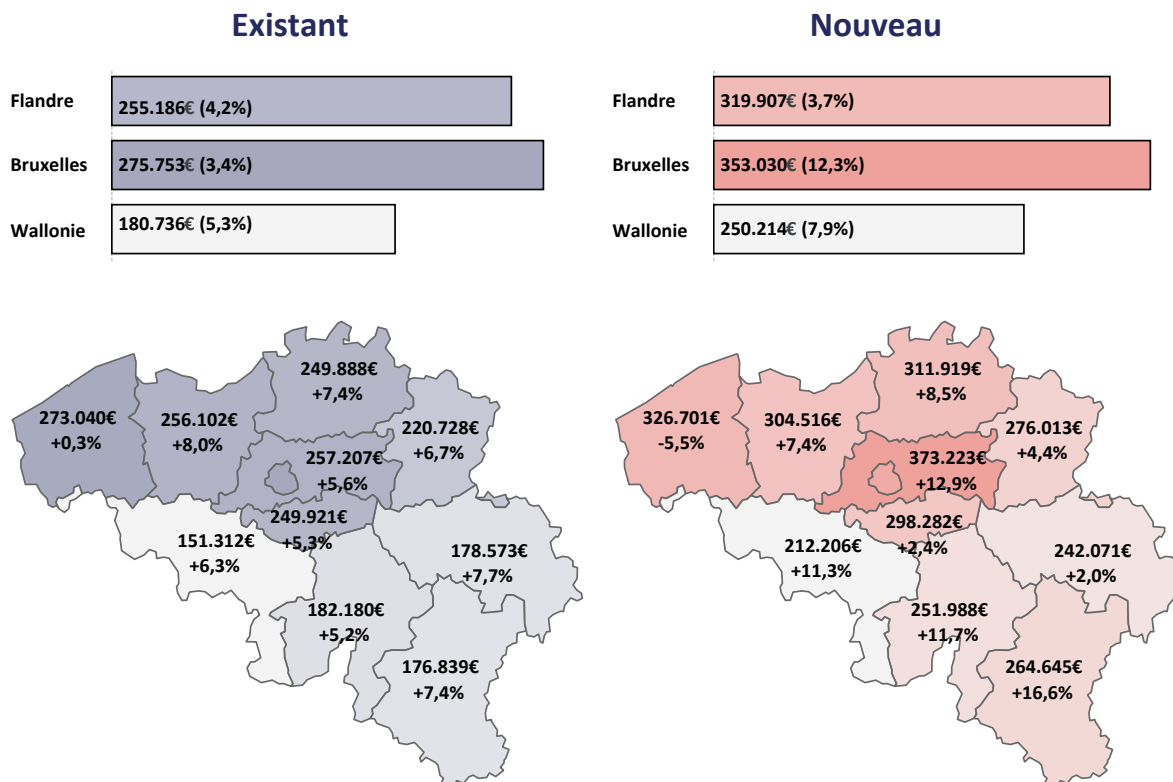


Appartements - PDM existant/nouveau 2022



Appartements - Prix moyen existant/nouveau

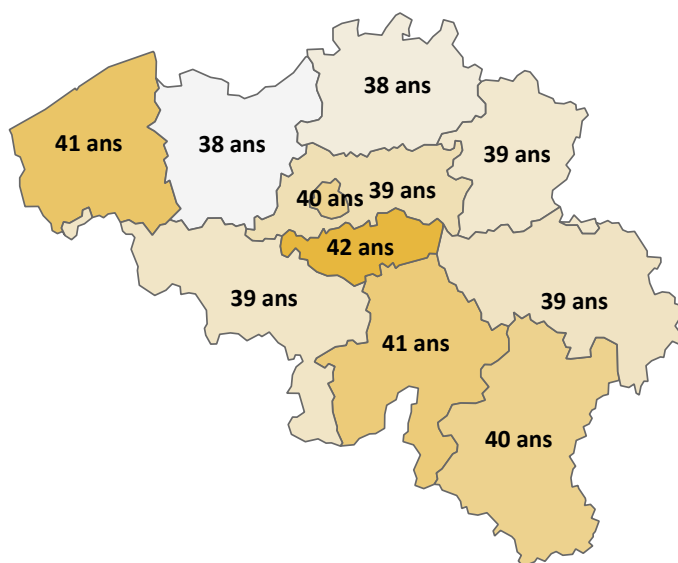
Prix moyens 2022 - évolution par rapport à 2021:



Âge des acheteurs

Année	<= 30	31 - 50	51 - 65	> 65
2018	30,5%	49,7%	15,9%	3,9%
2021	27,9%	51,6%	16,6%	3,8%
2022	30,3%	50,9%	15,0%	3,8%

Âge moyen:



Répartition des acheteurs de 30 ans ou moins:

	2018	2021	2022
Flandre Orientale	34,7%	32,0%	35,1%
Limbourg	34,0%	Liège 31,1%	Limbourg 34,1%
Anvers	33,6%	Anvers 30,3%	Anvers 33,8%
Hainaut	31,6%	Hainaut 30,0%	Hainaut 30,6%
Luxembourg	30,9%	Limbourg 29,5%	Liège 29,8%
Liège	29,6%	Namur 26,9%	Flandre Occidentale 29,6%
Flandre Occidentale	29,4%	Luxembourg 26,9%	Luxembourg 28,8%
Namur	28,1%	Flandre Occidentale 24,9%	Brabant Flamand 27,4%
Brabant Flamand	28,0%	Brabant Flamand 24,8%	Namur 26,4%
Brabant Wallon	20,0%	Brabant Wallon 19,1%	Brabant Wallon 18,5%